



pakedge ➤

# Superior Networking

## Product Description

With so many devices being used simultaneously and heavily taxing your home network, how can you ensure optimal performance every day?

Network stability and strength is critical and you shouldn't settle for sub-par wireless performance. Pakedge wireless networks and superior routers work together to provide you with high-speeds, reliability, and consistent peak performance.



### About pakedge

Pakedge delivers unsurpassed reliability and consistency. From a few connected devices to a fully automated home, Pakedge can evolve when your needs do.

**JT** 

**ZERO**   
Powered by **JT** 

# Wireless Access Points

## Pakedge® 802.11ac 4x4 Wave 2 Access Point, International



### Description

Designed for pros, the Pakedge WA-4200 Wave 2 Indoor Access Point delivers exceptional performance for your most demanding customers. It's ideal for high-density residential and commercial jobs where speed is critical. Engineered with 4x4 MU-MIMO Wave 2 wireless technology and a max data rate of 2,600 Mbps, the WA-4200 can transmit to twice as many devices simultaneously compared to 2x2 APs.

The WA-4200 is engineered with a new, highspeed chipset that delivers faster speeds, greater reliability, and smooth client handoffs anywhere in the home. Beamforming technology focuses and directs the wireless signal to improve performance for bandwidth-intensive devices and real-time 4K/HD applications.

WA Series access points are designed to save installers time. All WA Series access points include easy-to-use mounting templates and accessories to significantly reduce installation time using an easy 3-step process. They also include BakPak, which delivers a streamlined multi-AP deployment process and enables complete cloud configuration and management to reduce service calls and install time.

### Features

- Next-generation 802.11ac Wave 2 technology
- 4x4 MU-MIMO antenna design
- Up to 2,600 Mbps max data rate
- Beamforming technology
- 802.11r/k/v roaming standards
- Auto-channel selection
- 8 secure SSIDs (4 per band) + 2 guest SSIDs (1 per band)
- WPA-WPA2-PSK security encryption
- BakPak cloud configuration and remote management
- Two 1 Gbps Ethernet ports
- Link aggregation (LACP)
- Dynamic Frequency Selection (DFS)
- Powered with 802.3at PoE+
- Mounting template and accessory kit included
- In-ceiling bracket (coming soon)



# Wireless Access Points

## Pakedge® 802.11ac 3x3 Access Point, International



### Description

Step up your wireless experience with a high performance 3x3 dual-band enterprise class wireless access point (WAP) from Pakedge, the 2013, 2014 and 2015 CEPro Brand Leader for networking. The WK-2 WAP brings the features and functionality of the WK-2, but with the addition of a 3x3 antenna array – for increased bandwidth and throughput.

The WK-2 WAP, incorporates 802.11ac technology that is five times faster, supports twice as many clients, and has a larger usable range than previous generation 802.11n technology. Designed to provide seamless connectivity in high RF interference urban environments with SmartWav™, TruStream™ and SectorMaxx™ technologies, it is capable of covering up to 3000 to 5000 square feet.

Its remarkably simple and intuitive menu enables the WK-2 to be setup in minutes. Powered by PoE+, the WAP can be placed anywhere without the need for an electrical outlet nearby. Included mounting brackets allow the WAP to be mounted on a wall, a ceiling or a drop ceiling.

Made of a high quality polycarbonate casing with internal antennas, the WK-2 WAP blends industrial design practices with architectural aesthetics for a clean sleek look that looks as good as it performs.

### Features

- High interference environments – multi-dwelling units, urban city environments
- Multi-user environments with high bandwidth applications and high-traffic installations
- Integrating wirelessly connected Control4 equipment into the network
- Futureproofing networks
- 3 x 3 high power 802.11ac for high throughput and high range
- TruStream prioritizes latency sensitive wi-fi traffic (voice and video streaming)
- PakedgeZones provides traffic segmentation for efficient traffic management and security
- 16 SSIDs & 2 Guest Networks (8 + 1 per band)
- Enhanced security – guest network access, client/device blocking, WPA/WPA2 encryption, security profiles
- One touch cloud based firmware updates ensure WAP is always current
- PoE+ Powered enables placement in locations without power outlets (attics, access tunnels, etc.)
- Intuitive and simple user interface common across Pakedge product line
- NK-1 wireless controller compatible for larger wireless project installations
- 2nd LAN port enables wired network extensions



# Wireless Access Points

## Pakedge® 802.11ac 2x2 Access Point with BakPak Lite, International



### Description

Step up your wireless experience with a high performance dual-band enterprise class wireless access point (WAP) from Pakedge, the 2013, 2014 and 2015 CEPro Brand Leader for networking. The WK-1 WAP excels in three areas – performance, simplicity and architectural aesthetics.

The WK-1 WAP, incorporates 802.11ac technology that is three times faster, supports twice as many clients, and has a larger usable range than previous generation 802.11n technology. Designed to provide seamless connectivity in high RF interference urban environments with SmartWav™, TruStream™ and SectorMaxx™ technologies, it is capable of covering up to 3000 to 5000 square feet.

Its remarkably simple and intuitive menu enables the WK-1 to be setup in minutes. Powered by PoE+, the WAP can be placed anywhere without the need for an electrical outlet nearby. Included mounting brackets allow the WAP to be mounted on a wall, a ceiling or a drop ceiling.

Made of a high quality polycarbonate casing with internal antennas, the WK-1 WAP blends industrial design practices with architectural aesthetics for a clean sleek look that looks as good as it performs.

### Features

- High interference environments – multi-dwelling units, urban city environments
- Multi-user environments with high bandwidth applications and high-traffic installations
- Integrating wirelessly connected Control4 equipment into the network
- Futureproofing networks
- 2 x 2 high power 802.11ac for high throughput and high range
- TruStream prioritizes latency sensitive wi-fi traffic (voice and video streaming)
- PakedgeZones provides traffic segmentation for efficient traffic management and security
- 16 SSIDs & 2 Guest Networks (8 + 1 per band)
- Enhanced security – guest network access, client/device blocking, WPA/WPA2 encryption, security profiles
- One touch cloud based firmware updates ensure WAP is always current
- PoE+ Powered enables placement in locations without power outlets (attics, access tunnels, etc.)
- Intuitive and simple user interface common across Pakedge product line
- NK-1-CG1 wireless controller compatible for larger wireless project installations
- 2nd LAN port enables wired network extensions



# Wireless Access Points

## Pakedge® 802.11AC 2x2 Wave 2 Outdoor Access Point, International



### Description

The WA Series WA-2200-O is a next-generation Wave 2 outdoor AP designed to extend exceptional Wi-Fi outdoors. An IP55-rated weather- and dustresistant enclosure withstands temperatures from -40 °C to 70 °C (-40 °F to 158 °F), making this AP ideal for even the most severe outdoor conditions.

The WA-2200-O is engineered with a highspeed chipset that delivers faster speeds, optimal coverage, and smooth roaming to the outdoors. Next-generation 802.11ac Wave 2 MU MIMO and beamforming technology provide better performance to more high-speed devices simultaneously, while promising exceptional quality for 4K/HD video streaming applications.

The WA-2200-O offers a fast and easy setup process designed to streamline your deployments. This AP supports complete cloud configuration for singleand multi-AP deployments through BakPak, cutting down on install time and eliminating controller hardware costs.

Like other WA Series APs, the WA-2200-O features a sleek, aesthetically designed form factor that will delight your customers. Flexible wall or pole mounting options and internal antennas ensure this access point can be easily hidden out of sight without compromising coverage. Plus, 802.3at PoE+ compliance eliminates extra wiring.

### Features

- 802.11ac Wave 2 high-performance outdoor access point
- High-speed chipset with quad-core CPU
- 2x2:2 Wave 2 MU-MIMO and beamforming technology
- 1,300 Mbps max data rate (400 Mbps for 2.4 GHz; 867 Mbps for 5 GHz)
- Dust and water-resistant IP55 rating designed to withstand temperatures from -40 °C to 70 °C (-40 °F to 158 °F)
- 802.11k/v/r roaming standards
- BakPak Lite built in for complete cloud configuration and management
- Controller-less multi-AP deployments with BakPak
- Powered by 802.3at PoE+ (power supply sold separately)
- Flexible wall or pole mounting options
- Small, sleek form factor with aesthetic design



# Routers

## Pakedge® 7 Port Gigabit Router with BakPak



### Description

The feature-rich RK-1 unlocks the power of AV networks with a specially designed dual-core processor. Designed for 1 Gbps LAN – WAN traffic throughput, and built for high-performance AV networking, RK series routers are ideal for medium to large networks with multiple types of devices and access to high-speed internet connections. Built for ease of use with a simple GUI, the RK-Series makes no compromises while ensuring a simple, problem-free setup.

Thanks to the addition of BakPak integrators can remotely monitor, configure, and manage entire connected environments. Rather than logging into countless devices to perform more tedious tasks, you can streamline and finish configuring and deploying systems all from one dynamic interface.

Log in directly from BakPak to configure and manage devices without keeping track of a list of IP addresses or doing any port forwarding. With the new Control4 integration, you can even monitor ZigBee and Z-Wave home automation devices.

Best of all, BakPak is now free! BakPak is included with the NK-1 wireless controllers at no extra cost—no subscriptions or licensing fees.

### Features

- Medium to large networks supporting a large number of devices
- Up to 1 Gbps WAN-to-LAN throughput
- Upgrade situations from consumer grade networks
- Networks requiring traffic segmentation (VLANs, PakedgeZones™)
- Networks with many bandwidth heavy or latency sensitive devices
- 7 Gigabit Ports – 2 WAN, 5 LAN
- Up to 1 Gbps LAN – WAN throughput
- 2 USB ports for file sharing, media server
- AV traffic management (IGMP snooping, QoS)
- Traffic segmentation with PakedgeZones™
- Security (Firewall, Virtual DMZ, PPTP VPN, Device and Website Access Control, guest port)
- Intuitive browser-based management menu
- Onboard diagnostics and real-time reporting
- Secure remote access for support
- Pakedge Dynamic DNS
- Cloud firmware update
- Supports OpenVPN



# Routers

## Pakedge® RT-3100 Gigabit 1 WAN 4 LAN Router with BakPak



### Description

The new Pakedge RT-3100 Gigabit Router with BakPak is the latest addition to the Pakedge line, giving you a go-to, high-performance router perfect for the jobs dealers install every day. The RT-3100 delivers gigabit WAN-to-LAN throughput for fast, reliable performance customers require.

Designed for a fast install, the RT-3100 offers an intuitive user interface and streamlined configuration, making installs more efficient and ensuring faster deployments. The RT-3100 provides a customizable firewall that enables more granular control of network traffic. Its advanced VLAN and policy management allows dealers to configure access between VLANs down to the device and port level.

The RT-3100 also has BakPak remote management built in, enabling dealers to proactively manage and monitor their customer's network and connected devices such as automation, lighting, entertainment, and more. BakPak enables dealers to deliver proactive customer service, streamline their business, and tackle more jobs.

### Features

- High-performance router supporting speeds up to 1 gigabit WAN-to-LAN throughput
- BakPak built in for proactive remote management of the network and connected devices
- Quick setup and streamlined configuration
- Single WAN and 4 LAN ports with a customizable LAN port for dual-WAN failover
- Customizable firewall policies for granular control of network traffic
- Inter-VLAN and multicast routing
- OpenVPN, PPTP, and Pakedge DDNS
- 3-year warranty



# Routers

## RT-3100 – Additional Features & Benefits

### High-Performance Gigabit speed

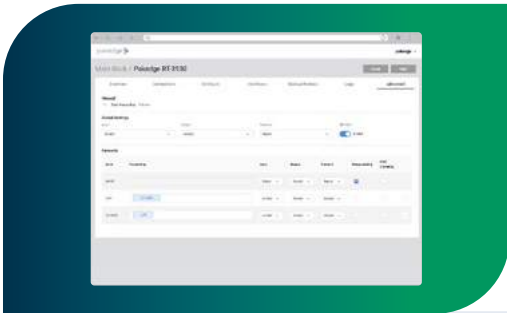
ISP Gigabit speeds are becoming ever more available in today's homes. The RT-3100 is engineered to deliver up to 1 Gigabit WAN-to-LAN throughput for exceptional performance to the growing number of bandwidth-hungry smart devices found in homes and businesses.

### Fast and easy Installs



The RT-3100 is designed to install fast. The user interface is easy to use and consistent with the newest Pagedge products so it is familiar to your installers. The new Configure and Connections pages streamline set up, making installs more efficient and ensuring faster deployment times.

### Customizable Firewall giving you more control



The RT-3100 provides a customizable firewall for more granular control of network traffic. Advanced VLAN and policy management allows dealers to configure access between VLANs down to the device level, as well as specify ports for individual VLAN access without the need for Managed Switches.

### Proactive Remote Management The Network and Devices



The RT-3100 has BakPak remote management built-in, enabling dealers to proactively manage and monitor their customer's network and the devices connected to it, including smart technology, automation, lighting, entertainment, and more. BakPak helps you increase your business efficiency and keep your customers happy without the need to roll a truck.





# Switches

## Commercial-grade performance for Residential, Commercial, & Pro-Av

Pakedge MS Series Layer 3 Managed Gigabit Ethernet Switches with built-in OvrC remote management are designed to handle your most demanding luxury residential, commercial, and pro-AV projects. Whether your clients require flawless video streaming, synchronized media distribution, or uninterrupted productivity, these switches deliver with pro-grade features and performance. The MS Series supports plug-and-play setup for standard installs and also offers advanced Layer 3 functionality and pro-AV features, including Dante, AES67, and Q-LAN support.

With five 12-, 24-, and 44-port models in a variety of PoE+ configurations and a range of 1Gbps Ethernet and optional 10Gbps SFP+ uplinks, there's an MS Series Switch to meet the needs of every install.

## Engineered for performance

MS Series Switches are built for professionals who deliver rock-solid networks in luxury residential, commercial, and pro-AV jobs. Choose the MS Series for large audio and video streaming projects and multi-rack jobs where maximum bandwidth is a must, such as large homes or commercial settings like sports bars, retail spaces, and more. With a range of 1Gbps Ethernet and optional 10Gbps SFP+ fiber uplinks, these switches are perfect for high-speed switch-to-switch connections and large media or video over IP deployments.

## Proactive Remote Management The Network and Devices



MS Switches support Layer 2 functionality including VLANs, IGMP, and spanning tree, in addition to professional AV protocols like Dante and Q-LAN. For more advanced commercial or residential jobs, these switches also provide Layer 3 functionality.



# Switches

## Dealer-inspired versatility



With five switches in 12-, 24-, and 44-port models, the MS Series offers a range of options to fit the needs of every project. For a clean install, all ports and connectors are rear-facing. To save space, we've made the 44-port model a true 1U, while the 12-port models can fit side-by-side on a single 1U.

## Pakedge® MS Series Layer 3 Managed Switch with OvrC | 44 1G, 24 PoE+, 370W, 4 10G SFP+



### Description

Pakedge MS Series Layer 3 Managed Switches are ideal for your most performance-demanding luxury residential, commercial, and pro-AV projects. When your clients require flawless video streaming, synchronized media distribution, and uninterrupted productivity, MS Series switches deliver with commercial-grade performance and convenient versatility.

The MS Series was designed based on extensive dealer feedback with features including rear-facing ports, PoE+ power budgeting, and the option for either plug-and-play setup for basic installs or advanced Layer 3 functionality for more complex projects. With five 12-, 24-, and 44-port models in a variety of PoE+ configurations and a range of 1 Gbps Ethernet and optional 10 Gbps SFP+ uplinks on every switch, there's an MS switch to meet the needs of every install.

MS Series switches come with free OvrC remote management and monitoring built in with no additional hardware required, so you can stay connected and provide world-class customer service from anywhere in the world. OvrC also comes with a client-facing mobile app that empowers customers to reboot devices and fix common issues on their own, saving you a costly truck roll.



# Switches

## Pakedge® MS Series Layer 3 Managed Switch with OvrC | 44 1G, 24 PoE+, 370W, 4 10G SFP+ (cont.)

### Features

**Engineered For Ultimate Performance:** MS Series switches are designed to handle luxury residential, commercial, and pro-AV jobs and are ideal for customers who demand ultimate performance and reliability. Choose the MS Series switch for large audio and video streaming projects and multi-rack jobs where maximum bandwidth is a must, such as large residential projects or commercial settings like sports bars, retail spaces, and more.

**Commercial Grade:** MS switches support Layer 2 switch functionality including VLANs, IGMP, and spanning tree, in addition to professional AV protocols like Dante and Q-LAN. For more advanced commercial or residential jobs, these switches also provide Layer 3 functionality.

**Built For Speed:** With improved PoE+ budgeting that supports more PoE-powered devices and a range of 1 Gbps Ethernet and optional 1 Gbps and 10 Gbps SFP+ fiber uplinks, these switches are perfect for high-speed switch-to-switch connections and large media or video-over-IP deployments. (SFP+ uplinks require SFP accessories, sold separately.)

**Pro-AV Functionality:** The MS Series offers support for audio-over-IP protocols including Dante, AES67, and Q-LAN, as well as support for video-over-IP systems with IGMP v2/v3 and PIM.

**Dealer-Inspired Versatility:** With five switches in 12-, 24-, and 44-port models, the MS Series offers a range of options to fit the needs of every project. For easy installs, we've made the 44-port model a true 1U, while the 12-port models can fit side-by-side on a single 1U space.

**OvrC Remote Management:** Install, set up, and manage your client's network from anywhere in the world with built-in OvrC remote management. Pros around the world trust OvrC, and now you can harness the power of remote management right out of the box with no additional hardware required. With OvrC, you can manage PoE power and consumption per port, reboot ports, update firmware, and more—all 100% remotely via the OvrC desktop or mobile app.

**Client-Facing Mobile App:** Not only is OvrC completely free to use, it also comes with a free, customizable client-facing mobile app that empowers your customers to reboot devices or fix small issues on their own through a series of pre-configured commands. You can even show them how to manage Wi-Fi access or restrict network content with the push of a button.

**Aesthetic and Stress-Free Install:** MS Series switches feature an eye-catching matching front panel that you'll be proud to show off. Rackmounting hardware is included in the box, and rearfacing ports make it easy to deliver a clean look.

**Made To Last:** Variable fans provide quiet cooling to protect components, and enhanced cooling will activate in warmer temperatures, ensuring these switches operate safely in any environment. A three-year warranty offers additional peace of mind and gives you the ability to install with confidence.



# OvrC

## OvrC is the RMM platform of the future

### Save time. Grow your business

Save Time. Grow Your Business. OvrC is a free, cloud-based remote management and monitoring (RMM) platform designed exclusively for professionals. It's also the most powerful and most deployed remote management solution in the industry. It's the platform pros trust to manage over 1.5 million devices in homes and businesses around the world and offers the largest ecosystem of connected devices, including over 260+ SnapAV and third-party devices that pros use in jobs every day. From setup to support, OvrC empowers you to install, monitor, and troubleshoot connected devices remotely, helping you deliver world-class support from anywhere.

## A connected ecosystem now with Pakedge

When you can install, configure, and monitor every device on the job site within a single easy-to-use platform, you save time and create more opportunities to grow your business.

OvrC works with an ever-expanding list of products ranging from SnapAV connected brands like Araknis, WattBox, Luma, and Pakedge, to popular third-party choices like Google Nest, Pioneer, Samsung, Philips, and more. Soon BakPak and Ihiji Pros will be able to offer all their customers the incredible benefits of OvrC without needing to buy new hardware.

## Proactive customer service

When any of your customer's devices fall offline, OvrC automatically works to get their system back up and running without any involvement from you. OvrC also sends you a detailed alert of any activity, so you can make proactive changes and provide world-class service from anywhere in the world.

## OvrC works with your favourite brands

There's no other remote management solution on the market that can match the breadth of features and level of integration provided by OvrC.



# OvrC Home

## Lets your customers take initiative

When you're out of the office, out with your family, and customers can't reach you, OvrC Home lets them resolve common issues or manage their network on their own.

### Convenient



With the touch of a button, customers can fix small problems on their own schedule without needing to know system complexities.

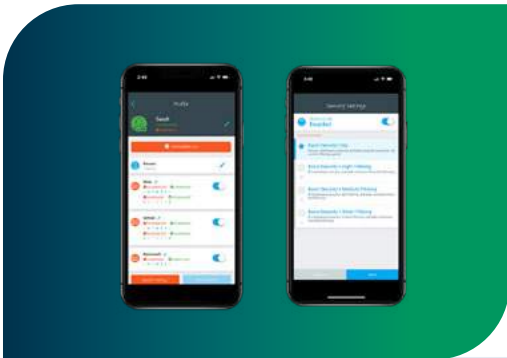
### Customizable



Create and update remote custom commands for your clients in OvrC Home, based on their individual needs. Through the app, they'll be able to reset any OvrC-enabled devices, plus devices connected to individual WattBox outlets or Araknis PoE ports.

Clients can even reset multiple devices with a single touch, through a sequence of resets pre-programmed with OvrC Home macros.

### Network Controls



Through the OvrC Home app, your customers can manage Wi-Fi access and filter network content with the push of a button.

With easy-to-setup user profiles, admins can schedule and restrict Wi-Fi access to anyone on the network.

Multiple filter levels range from basic malware protection to advanced content filtering, so customers can choose one that best fits their needs.



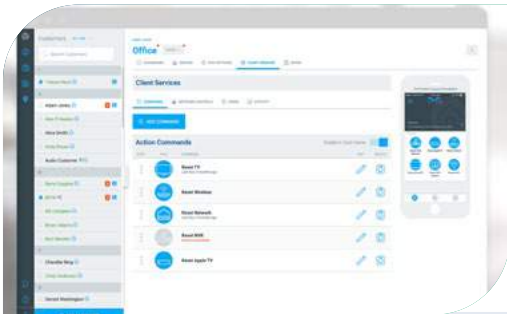
# OvrC Home

## Invite multiple users



Give OvrC Home to multiple users at any location, so everyone has access to the power of remote resets.

## View command history



OvrC Home provides a log of reset commands run by all users, so you can troubleshoot devices based on reliable information.



# OvrC Pro

OvrC Pro extends your visibility and access to the entire network of IP devices, including non-SnapAV products, all within the same OvrC platform you love. With OvrC Pro, you get access to enhanced troubleshooting capabilities and diagnostic data that makes remote support easy, eliminating unnecessary truck rolls and enabling you to provide world-class service to your clients.

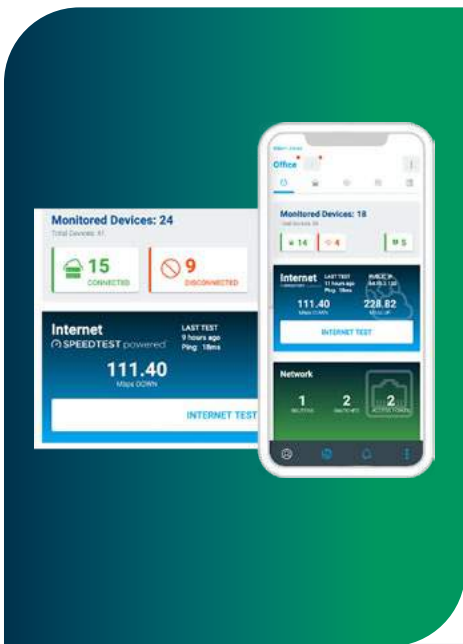
## OvrC Pro Lifetime License + Gigabit Hub



### Description

OvrC Pro extends your visibility and access to the entire network of IP devices, including non-SnapAV products, all within the same OvrC platform you love. With OvrC Pro, you get access to enhanced troubleshooting capabilities and diagnostic data that makes remote support easy, eliminating unnecessary truck rolls and enabling you to provide world-class service to your clients. To stay up to date on the latest OvrC features and functionality, check out our blog.

## View system health



### Description

Get access to the Location Dashboard view, which displays a quick snapshot of a location's system health for vital troubleshooting clues.

**Device Status** – View the number of online and offline devices, including SnapAV products and any Hub-found devices you choose to monitor.

**Firmware Updates** – See available firmware updates for SnapAV products.

**Network Tools** – Run an ISP internet test manually, check the latency of all products on the network, or quickly set up a new Araknis WAP SSID.

**ISP Internet Test History** – View ISP performance over time.

**Pakedge Router DHCP Client** – View all DHCP clients on the network, along with its status and associated IP address. Reserve IP addresses with a click of a button.

**Pakedge Wireless Client List** – View all wireless clients at the location, as well as signal strength, associated SSID, radio interface, and Tx/Rx values.



## Network diagnostics



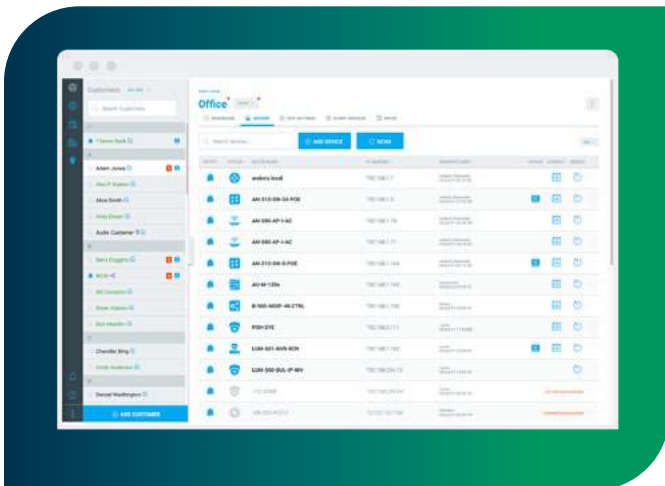
Built-in Network Diagnostic tools allow you to better recognize ISP speed trends and understand the source of the network latencies, to identify whether the issue is internal or external.

**ISP Internet Test** – Run manually or automatically on a schedule to see trends. Measures download speed, upload speed, and latency. We leverage Ookla’s latest Speedtest.net technology to derive results.

**Traceroute Analysis\*** – View the communication path from the Hub to any service or device inside or outside the network, along with the response times between hops. This helps determine the source of network latency (internal or external).

**Ping Test** – Ping IP addresses on the network to see device response times and packet loss on the local network.

## Scan & monitor devices



Once installed, the OvrC Hub automatically finds all IP devices on the network, relaying relevant device information to OvrC and regularly pinging their online status.

**General Device Information** – View device name, online status, MAC & IP address, manufacturer, latency, first seen and last seen time stamps.

**Open Ports and Services** – Scan available ports and the associated services, including HTTP, HTTPS, Telnet, SSH, and any other port/service combination that you define. See Advanced Remote Access section for more info.

**SNMP Information** – See standard networking device information, including name, description, contact, location, uptime, and a list of any network interfaces with its associated connection speed, state, and in/out data stats.

**ONVIF Information** – ONVIF is a standard camera protocol that allows dealers to view video stream URLs, camera snapshots, user list, and firmware versions on compliant hardware. Soft reboot the device for some select devices. (Capabilities may vary based on what is exposed by the manufacturer via ONVIF).

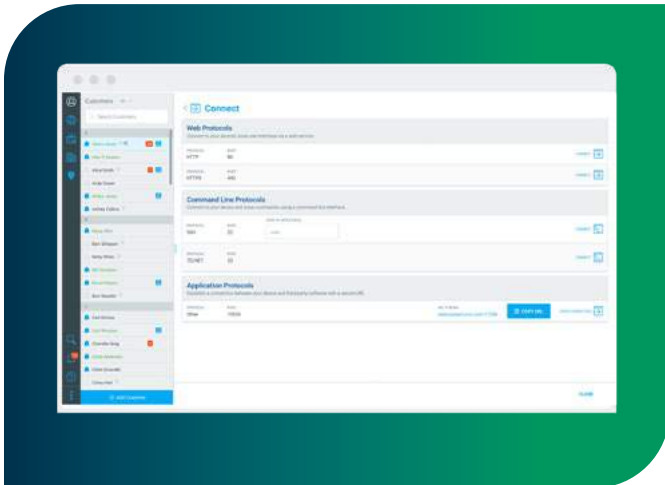
**PJLink Information** – PJLink is a standard protocol for operating and controlling compliant LAN-capable projectors. Reboot projectors and see status information for inputs, volume, errors (lamp error, power, etc.), and lamp (status, hours).

**Multiple VLANs Support** – Set up the Hub to scan and monitor IP devices across multiple VLANs. With the click of a button, you can designate specific devices to monitor. If the Hub doesn’t receive a ping response from a device within 10 minutes, you’ll be notified. Online/offline Notifications – Receive email and push notifications when the device you are monitoring goes online or offline. For manufacturer-specific device information, see the “Product Integration” section.





## Advanced remote access devices



The Hub automatically scans available ports and the associated services on devices and makes them accessible with a click of a button, all without port forwarding, VPN, or any other network setup.

**Web Connect (HTTP/HTTPS)** – When available, securely access the local web UI of any supported device remotely for deeper configuration and control.

**Console Connect (SSH, Telnet)** – Establish a secure SSH or Telnet connection to any supported device for enhanced diagnostics and troubleshooting.

**Product-Specific Capabilities** – Additional information and capabilities are available for a growing list of non-SnapAV products (see Product Integration section).

**Application Protocols** – Establish a raw socket connection through any port on your device and third-party software through a secure URL. Examples include: connecting to a computer onsite using Remote Desktop Protocol (RDP) or VNC, programming Crestron devices, accessing RTSP/H264 video streams, or any other single-port application. For any of these non-standard ports, you must configure the Hub to scan the specific port. See the Videos tab to learn how to do this.



To find out more about Pakedge, and the endless possibilities that automation can offer, bespoke to your needs, please contact the Zero1 team on:

T 888003  
E [zero1@jtglobal.com](mailto:zero1@jtglobal.com)  
W [www.zero1.je](http://www.zero1.je)

